

Rainbow beetle: Pattern

Canon ® is a registered trademark of Canon Inc. © Canon Inc. © Y. Watanabe

Canon

PAPER CRAFT

<http://www.canon.com/c-park/en/>



View of completed model

Rainbow beetle

Editor:  THE NATIONAL SCIENCE MUSEUM
国立科学博物館

Scientific name: *Phalacrognathus muelleri*. Rainbow beetles are found in Australian and New Guinean tropical rainforests.

Male rainbow beetles are 36.8-70.0 mm in length; females measure 25.5-36.4 mm. Two red bands mark the body, and body colors can change, depending on the type of lighting. These beetles are believed to keep body temperatures in check by reflecting sunlight.

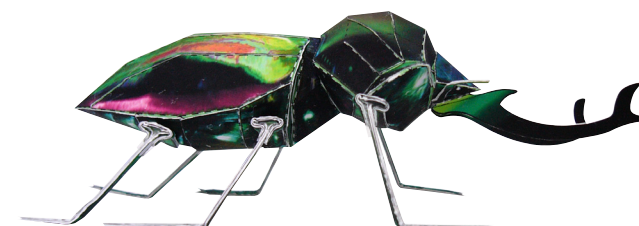
The beetle's large jaws are black; in male beetles, the jaws are slightly bent, with two points. The beetle's larval stage lasts 6 to 8 months and its adult stage 1-2 years. Rainbow beetles are a protected species in Australia.

*This model was designed for Papercraft and may differ from the original in some respects.

■ Parts list(pattern):Three A4 sheets(No.1 to No.3)

■ No. of Parts:69

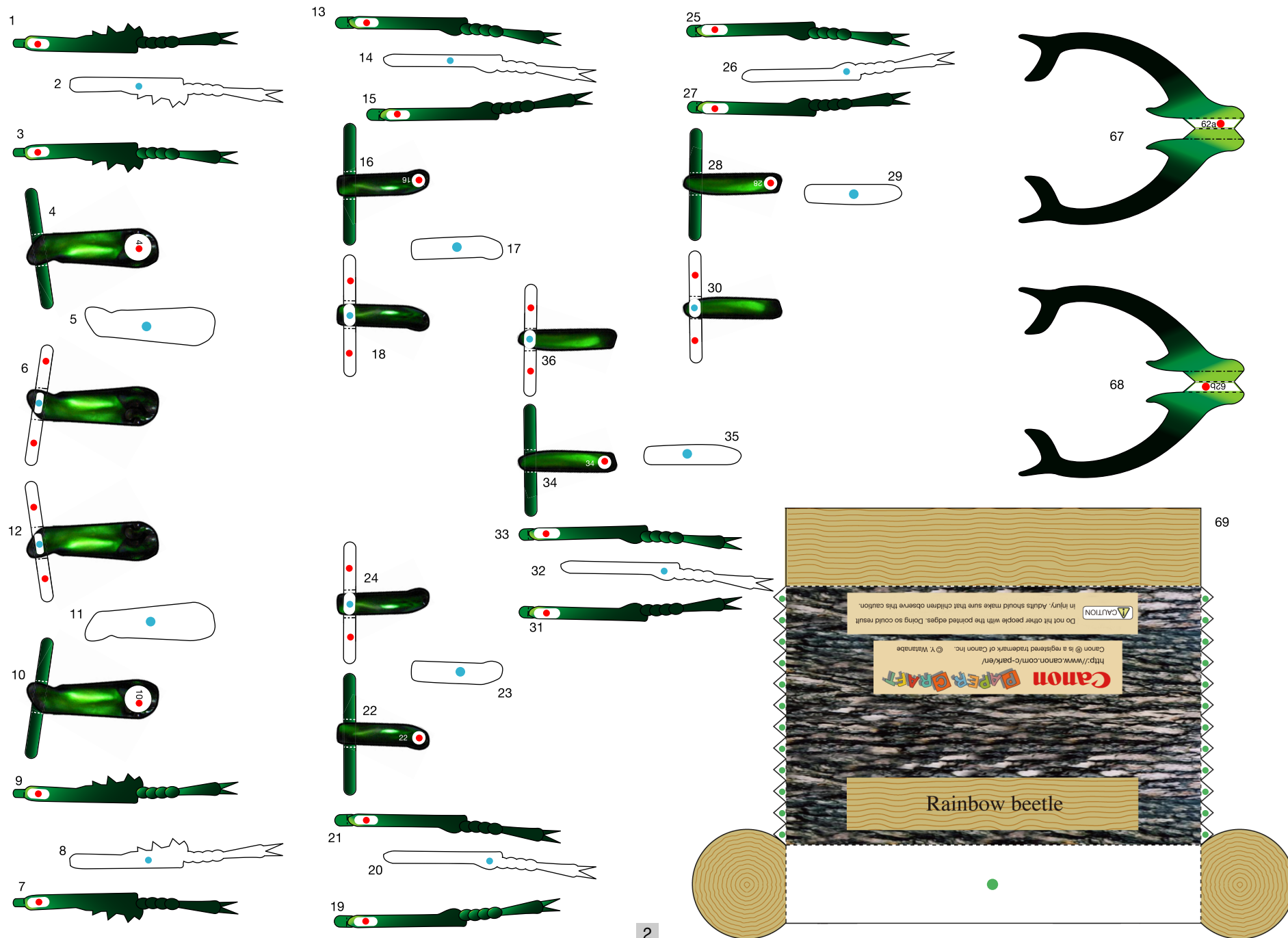
*Build the model by carefully reading the Assembly Instructions, in the parts sheet page order.



Rainbow beetle: Pattern

Canon ® is a registered trademark of Canon Inc. © Canon Inc. © Y. Watanabe

Canon



Rainbow beetle: Pattern

Canon ® is a registered trademark of Canon Inc. © Canon Inc. © Y. Watanabe

Canon

